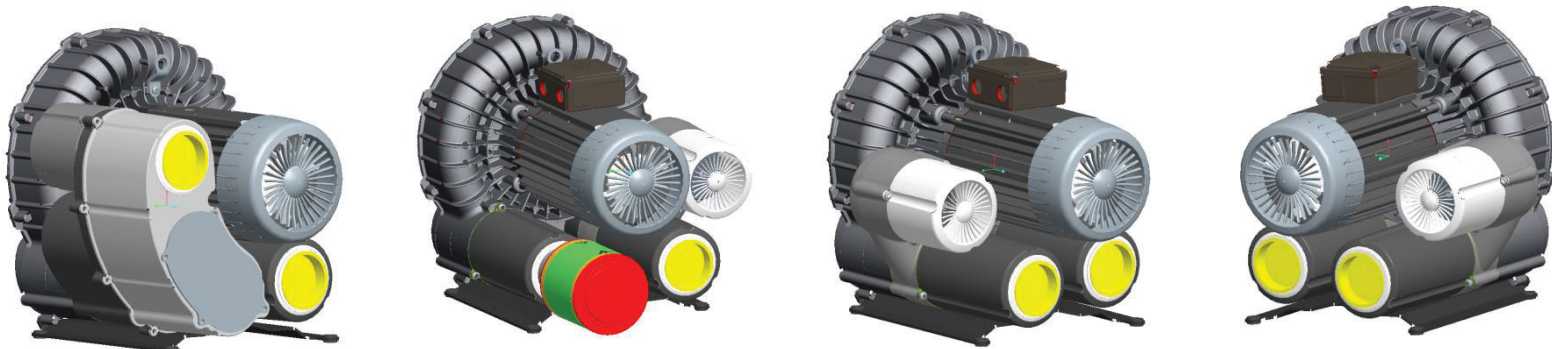




## **New SV-series: Integrated accessories**

- **More compact design of SV300 with integrated accessories by new design of filter housing**
- **Larger effective filter area of vacuum suction filter in comparison to SV7.330**  
→ significantly longer maintenance intervals.
- **Transparent filter housing → higher serviceability**
- **Vacuum relief valve is integrated in new housing**
- **Integrated vacuum suction filter: 2nd quarter of 2013**

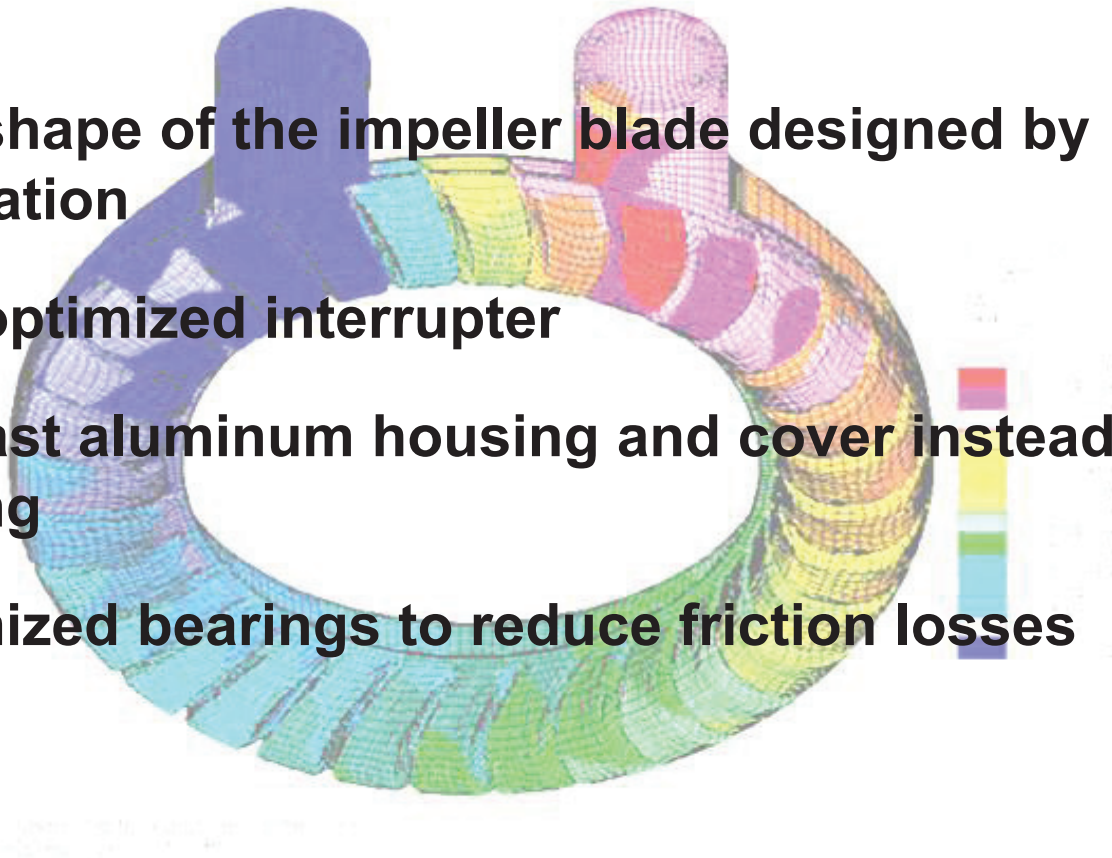


# Integrated accessories: Vacuum suction filter



## **New SV-series: Optimization of efficiency**

- **New shape of the impeller blade designed by CFD<sup>1</sup> simulation**
- **New optimized interrupter**
- **Die cast aluminum housing and cover instead of sand casting**
- **Optimized bearings to reduce friction losses**



---

CFD = Computational Fluid Dynamics



## **SV 300: Available variants**

- /1, /2- versions for vacuum and pressure application
- Standardized IE-motors for
  - Europe/China/India: 2.2/2.65 kW, 3.0/3.6 kW, 4.0/4.8 kW, 50/60 Hz
  - USA: 3.6 kW and 2,65 kW, 60 Hz
  - Japan/Korea: 2.2/2.65 kW and 3.0/3.6 kW 50/60 Hz
- Pressure relief valve, vacuum relief valve, suction filter for pressure application, integrated air inlet filter
- Variair units with 7.5 kW-motor, 400/460V +/-10%, 50/60 Hz

**Accessories and IE2-motors with specific voltages for Europe/China/India, USA (incl. UL, CSA) and Japan/Korea are available.**

## New SV-series: SV 300 with IE2-Motors

IP 55 + bimetal switch or IP65 + thermistor

### USA

- 60Hz: YY 208-230V / Y 460V +/- 10%, IE2, UL/CSA

### Europe, China, India

$\leq 4$  kW rated power

- 50 Hz:  $\Delta$  230 V / Y 400 V +/- 10%, IE2
- 60 Hz:  $\Delta$  265 V / Y 460 V +/- 10% IE2

*UL/CSA as an option*

$\geq 5.5$  kW rated power

- 50 Hz:  $\Delta$  400V // Y - +/- 10% IE2
- 60 Hz:  $\Delta$  460V // Y - +/- 10% IE2

*UL/CSA as an option*

### Japan, Korea, Brazil

- 200V +/- 10% 50 Hz // 350V +/- 10% 50 Hz IE2
- 200-220V +/- 10% 60 Hz // 350 – 380 V +/- 10% 60 Hz IE2

**Motor voltages according to worldwide needs available**

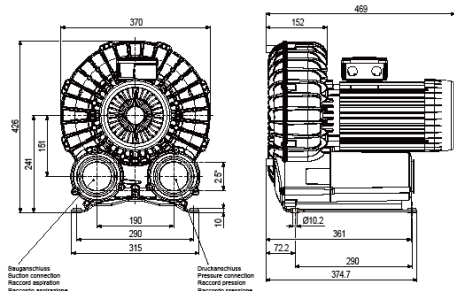
# New SV-series - Documentation SV300



SV 300/1-01

Selßenkanal-Verdichter	einstufig, luftgekühlt
Side channel blowers	single stage, air-cooled
Soufflantes à canal latéral	mono-étages, refroidis par air
Soffianti a canale laterale	monostadio, raffreddate ad aria

single stage, air-cooled  
mono-étages, refroidies par air  
monostadio, raffreddate ad aria



Revised: 2020-1-18, jessie@20.06.2020.pdf

[illegible]

## Data sheet

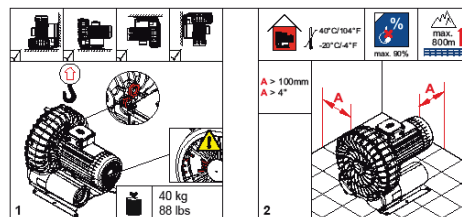
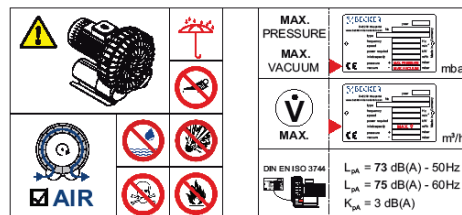


Betriebsanleitung  
Operating Instructions  
Instructions de service  
Istruzioni d'uso  
Handleiding  
Instrucciones para el manejo  
Manual de instruções  
Naudojimosi instrukcija  
Kasutusjuhend  
Lietošanas instrukcija  
Οδηγίες χρήσης  
取扱説明書  
사용설명서

Driftsinstruks  
Driftsinstruktioner  
Käyttöohje  
Driftsvejledning  
Instrukcja obsługi  
Kezelelési útmutató  
Návod k obsluze  
Navodilo za uporabo  
Navod na obsluhu  
El Kitabı  
Инструкция по эксплуатации  
使用说明书

SV 300

2006/42/EG



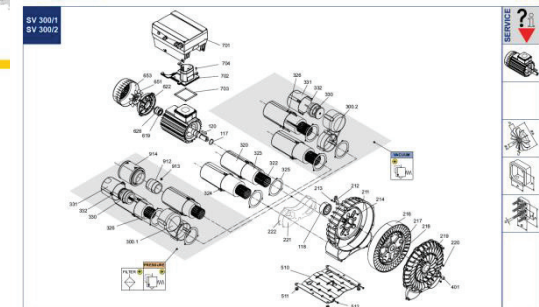
01/12 01/12

[www.becker-international.com](http://www.becker-international.com)

## Operating instruction

SV 300/1  
SV 300/2

**SERVICE**  
www.becker-international.com  
Sales and service network



[www.birkett-international.com](http://www.birkett-international.com)

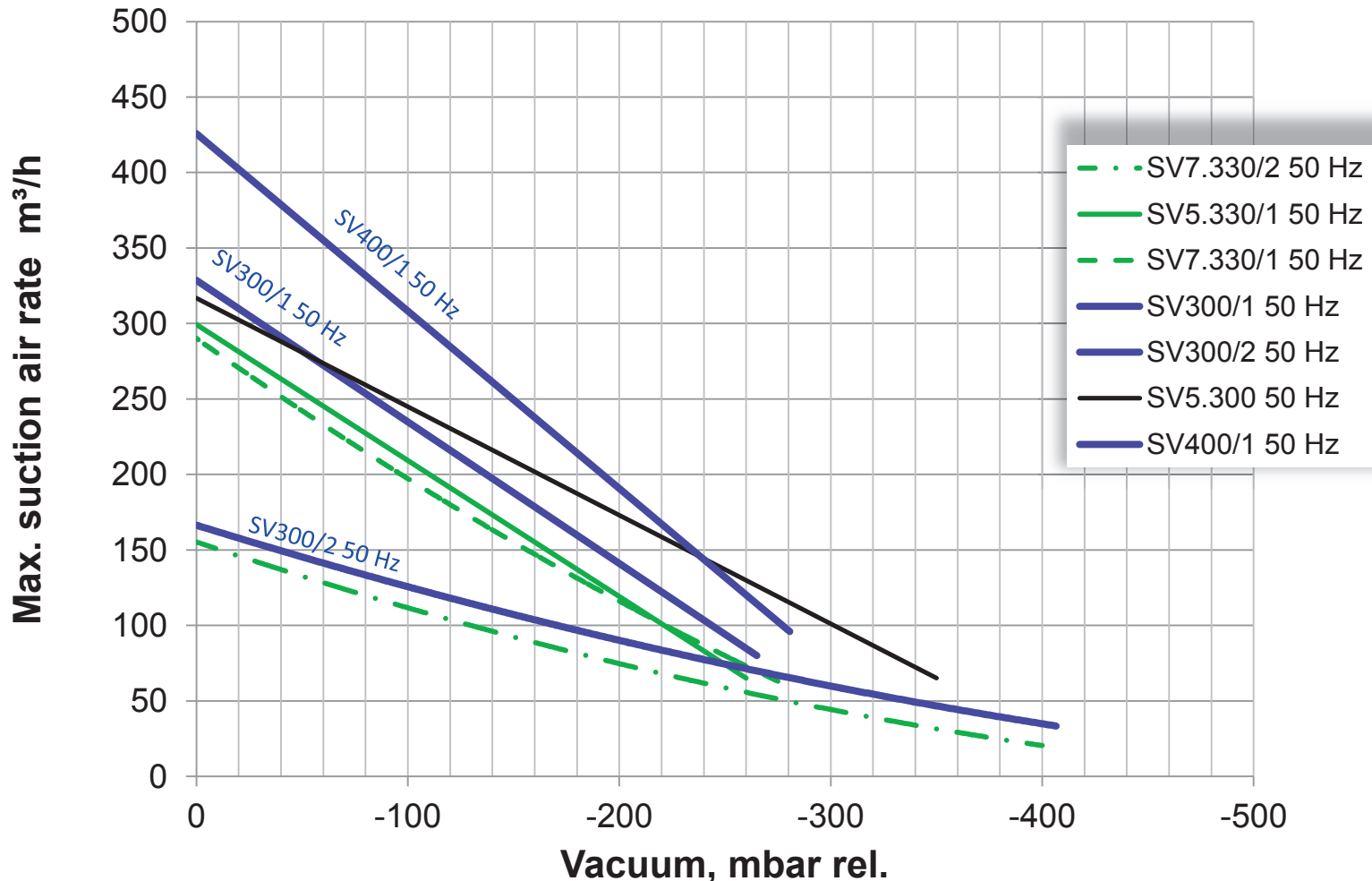
100%

## Spare part list

## Product documentation completely available.

# Replacement of existing series

➔ Vacuum pumps SV7.330/1, -/2, SV5.330, SV5.300



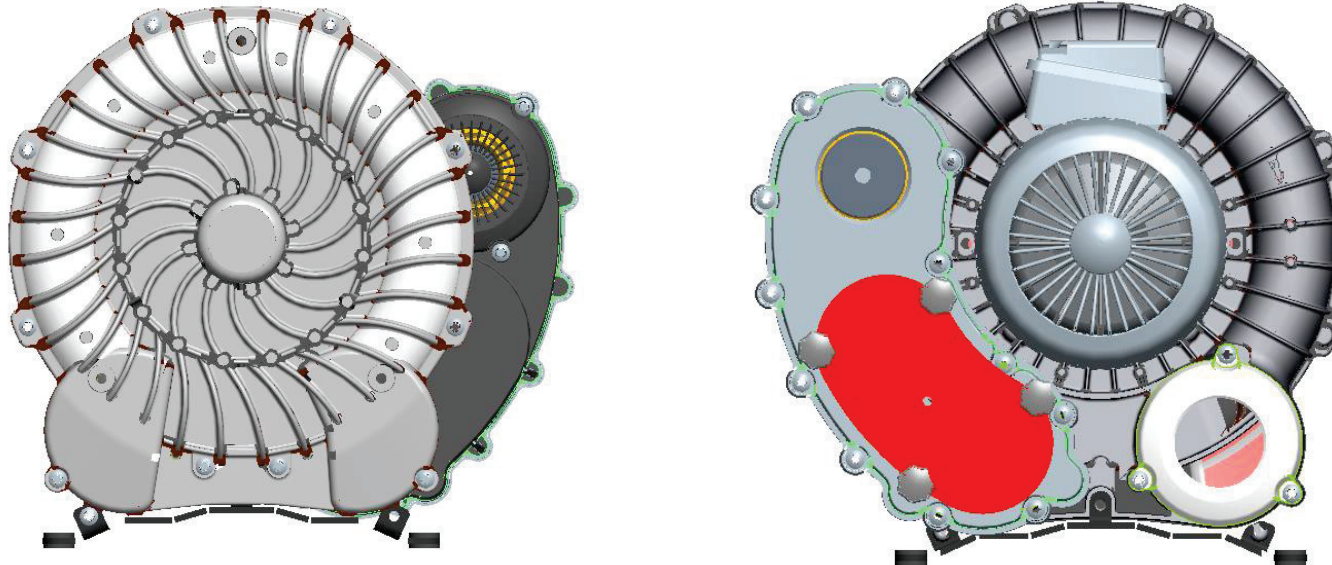


## **SV201 and SV200**

- **SV201 samples will be available in 2<sup>nd</sup> half of 2014**
- **SV201 characteristic line as good as or even better compared to SV8.190 / SV7.190**
- **SV200 as cost-optimized solution with**
  - **modified impeller (straight blades)**
  - **simplified accessories**

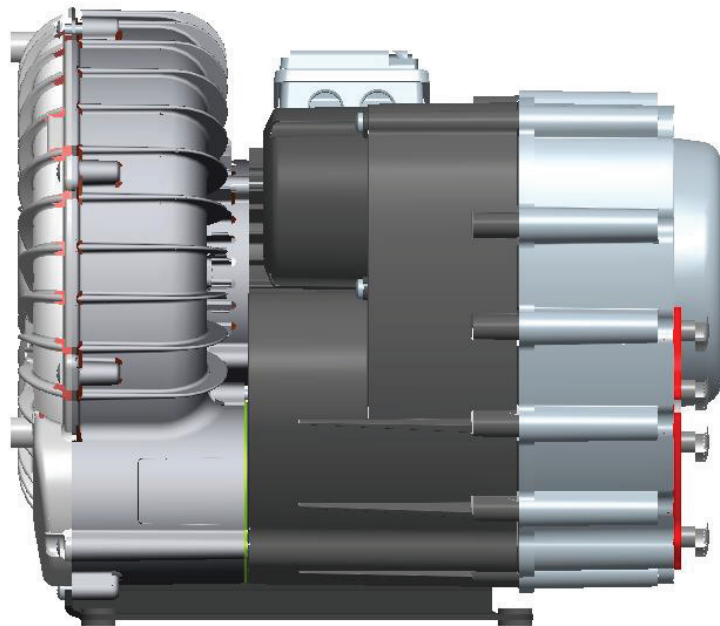
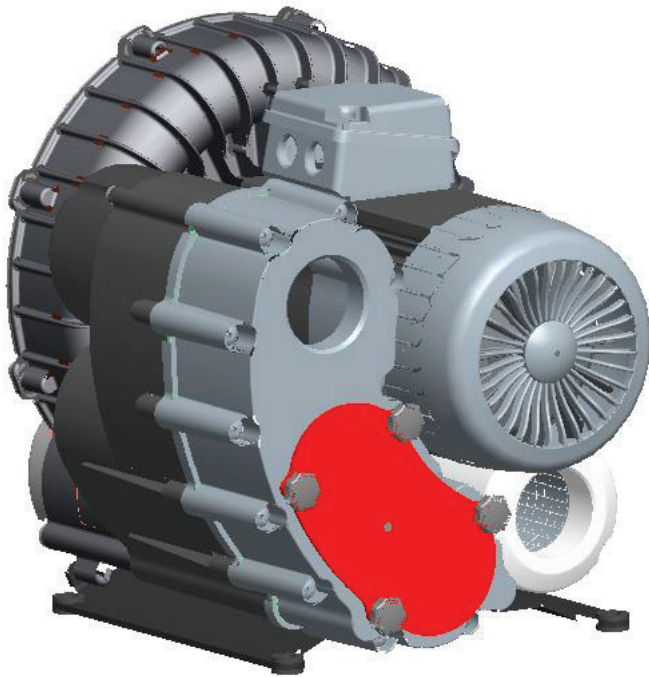
**Two versions in the range of 200 m<sup>3</sup>/h: SV201 and SV200**

## SV201

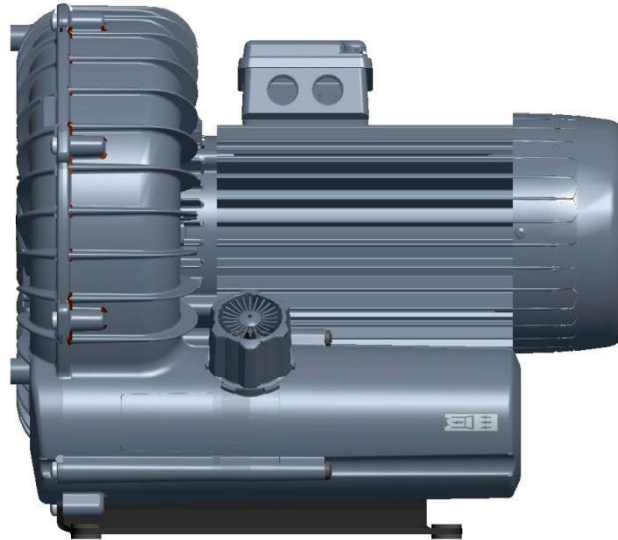


**Two versions in the range of 200 m<sup>3</sup>/h: SV201 and SV200**

## SV201

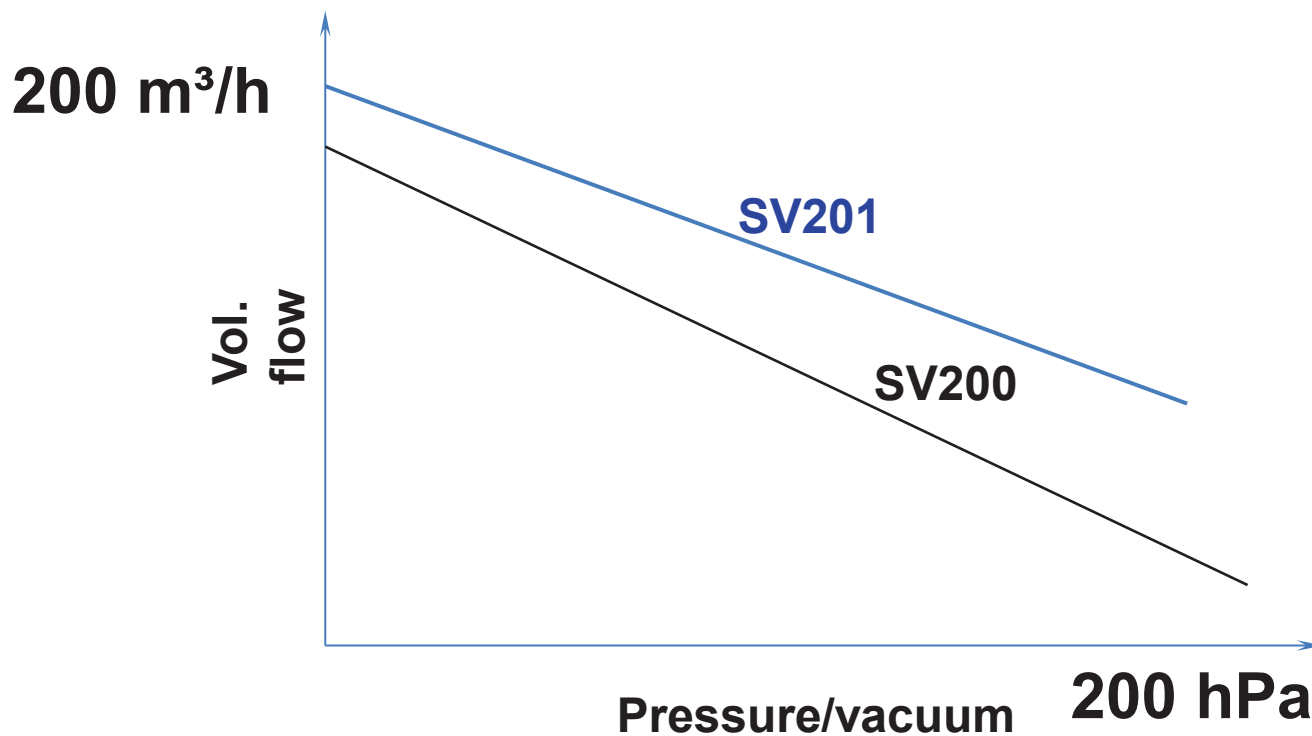


## SV200



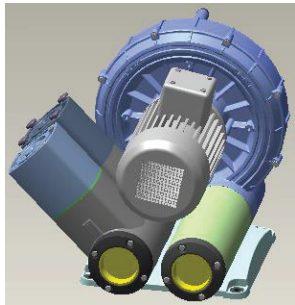
**Two versions in the range of 200 m<sup>3</sup>/h: SV201 and SV200**

# Difference of characteristic curve between SV201/1 and SV200/1

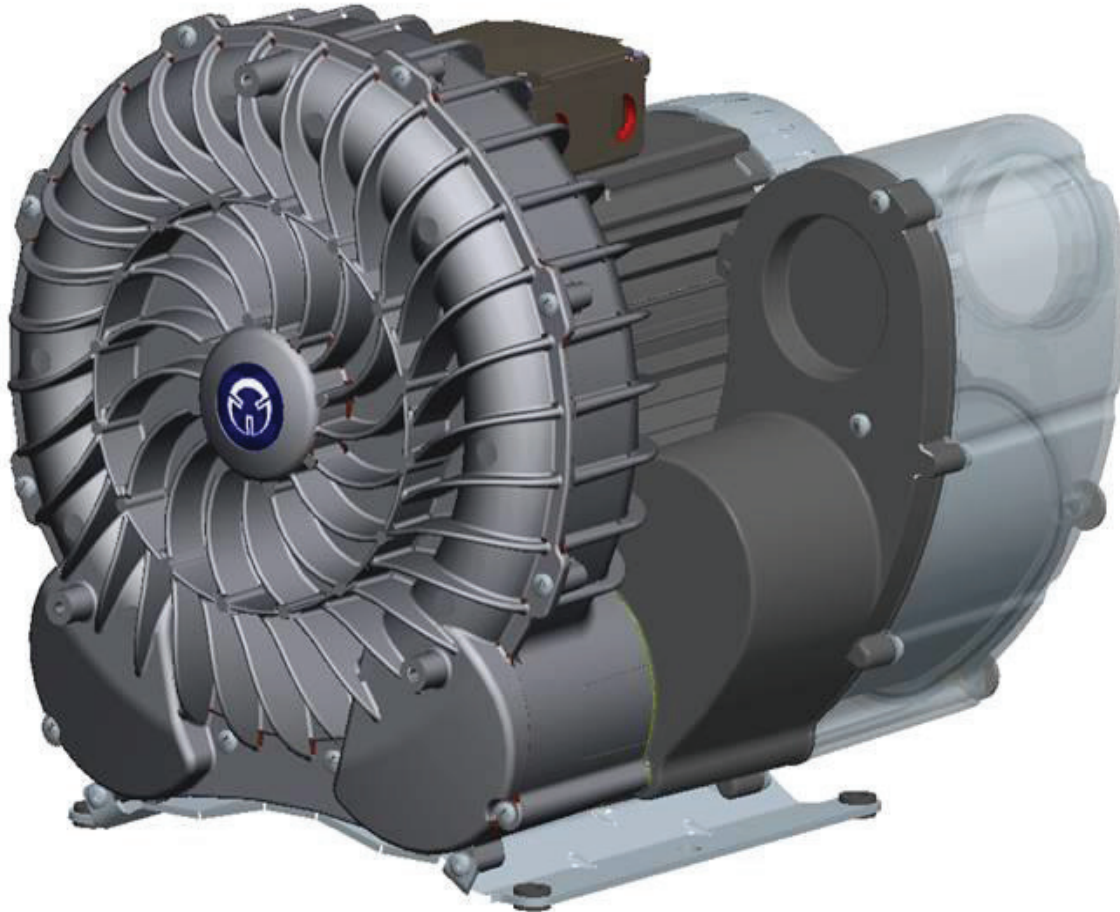




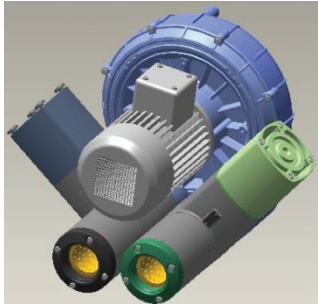
## **Integrated accessories: Vacuum suction filter and vacuum relief valve**



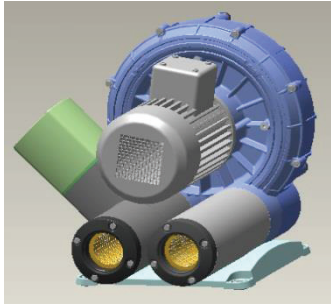
## **Integrated accessories: Vacuum suction filter**



# Integrated accessories: Suction filter and pressure relief valve



## **Integrated accessories: Vacuum relief valve**





## Integrated accessories: Pressure relief valve





## Accessories: Suction filter

