



*improving technology*



**NEW**

**We open you the doors to PG 30-F1**



## Sizes

**¿Do you want to save space without difficult maintenace service?**

**Side by side groups up to DN-200**





# Sizes

**The biggest sizes have side doors to make an easy maintenance.**

**DN-250 & DN-300**





# *Advantatges*

- **More compact**
- **Improve group handling**
- **Quickly accessibility**
- **Electronic control panel**
- **Easier and faster maintenace**
  - **Easily tighten belts**
  - **Quickly oil change**
  - **Easy filter change**
  - **Quick acces**





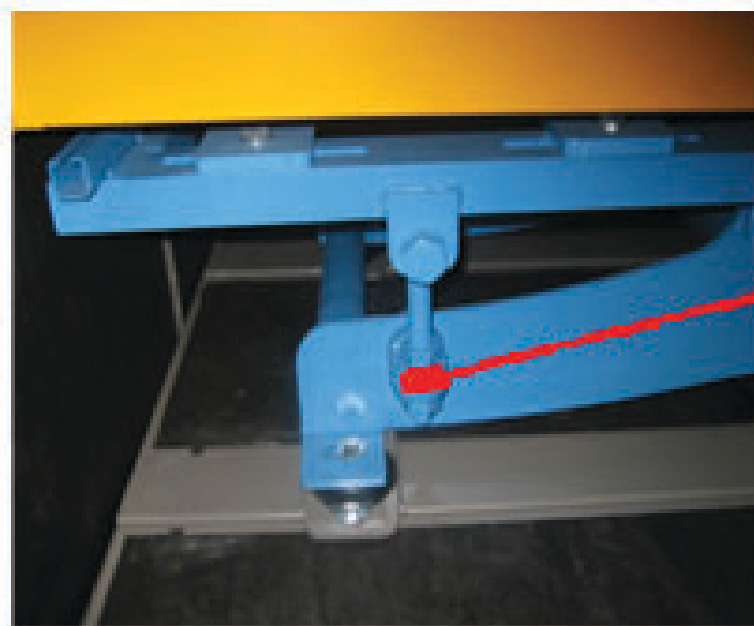
# Advantatges



**QUICK CHANGE OF FILTER CARTRIDGE**

**STEEL SHEET PROTECTION GUARD**

**ACOUSTIC FLOOR FOR  
HANDLING OF THE GROUP**



**EASY BELT TIGHTEN**

**PANEL WITH FAST LATCHES,  
EASILY TO DISMANTLE**





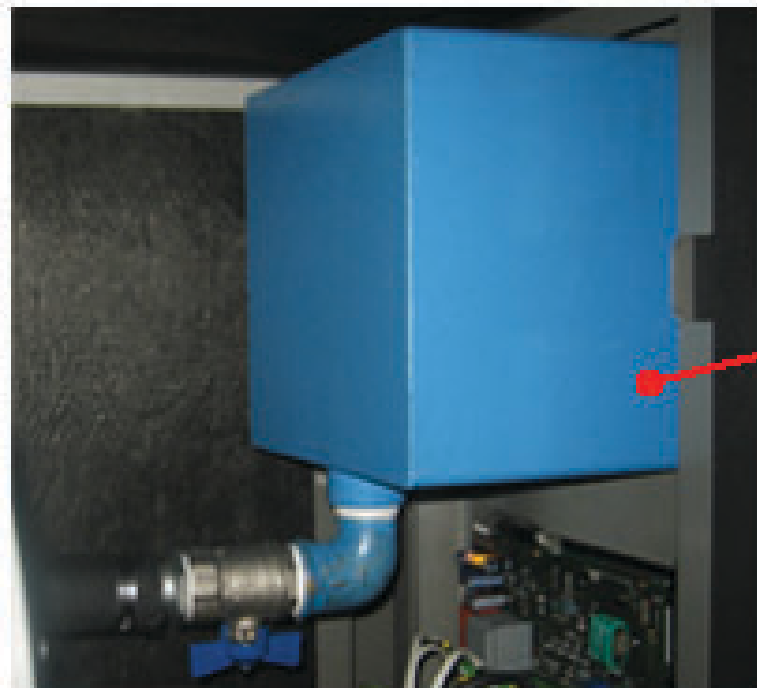
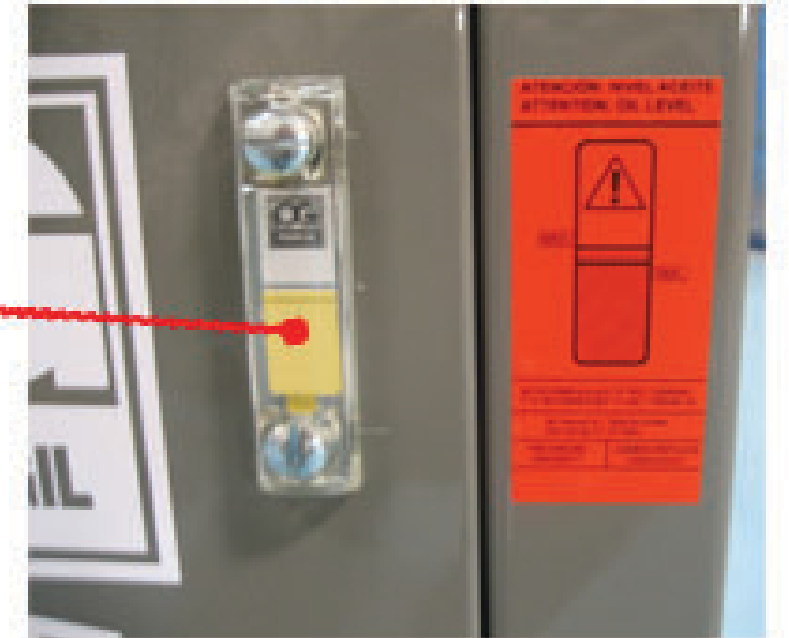
# Advantatges



**OUTSIDE OIL FILLING**

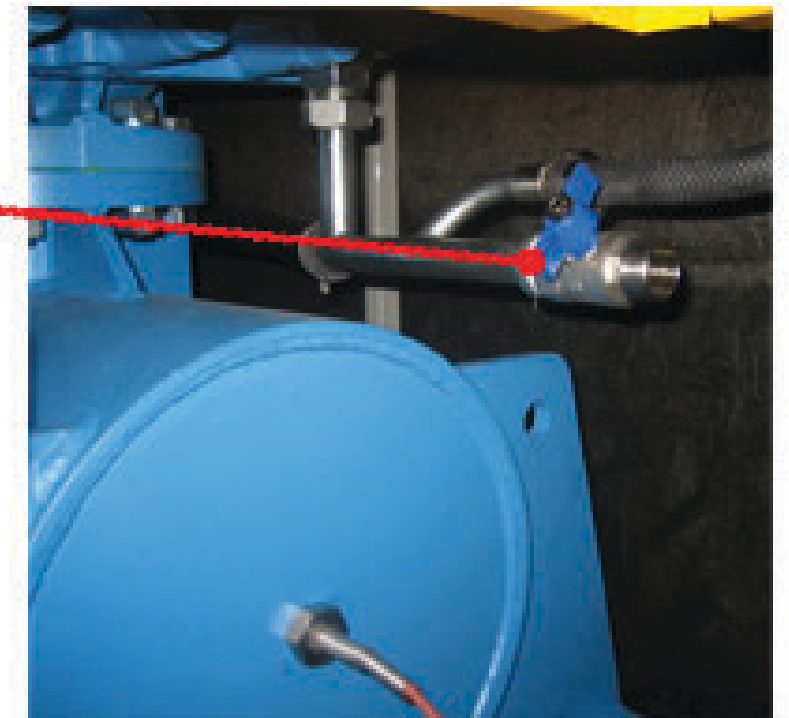
**OUTSIDE OIL LEVEL FOR QUICK CONTROL**

**SIDE BY SIDE ENCLOSURE**



**OIL RECIPIENT FOR FAST OIL CHANGE**

**EASY OIL EMPTING**





# Electronic Panel



## - Electronic panel

- Inlet temperature
- Outlet temperature
- Inlet pressure
- Outlet pressure
- Maintenance program
- Control of alarms
- Information of the blower

## - Options

- Vibrations
- Intensity of motor



### **New group PG-30-F1**

The new pressure group PG-30-F1, is designed for a faster maintenance more comfortable and more effective. The new range make possible to install several groups in battery (side by side) without interference, saving space and having a complete access for maintenance.

### **Main points of the new group:**

- 1.- Improving the access to the main points of maintenance.
- 2.- New points of maintenance located in the front and rear acoustic hood panels. Allowing installing groups side by side, optimizing space.
- 3.- New electronic control panel for measuring temperatures, pressures, vibrations and intensity of the motor.
- 4.- Outside level for a quick control.
- 5.- Quick change of filter cartridge, opening the door of the acoustic hood.
- 6.- New oil system for an easy filling and emptying.
- 7.- Easily tighten belts without having to dismantle acoustic hood.
- 8.- Acoustic hood floor is included for an easy transport.
- 9.- Safety valve is installed in airflow fan aspiration.
- 10.- Quick access to all valves (safety, check and relief) through impulse side panel.
- 11.- The new acoustic hood design allows an easy handling.