

## O 5.4

### Rotary vane vacuum pumps

- oil-lubricated and air-cooled, for short-time operation <sup>3)</sup>
- incl. integrated non return valve

### Drehschieber-Vakuumpumpen

- ölgeschmiert und luftgekühlt, für Kurzzeitbetrieb <sup>3)</sup>
- inkl. integriertem Rückschlagventil

### Pompes à vide à palettes

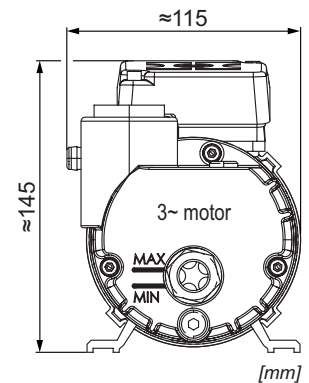
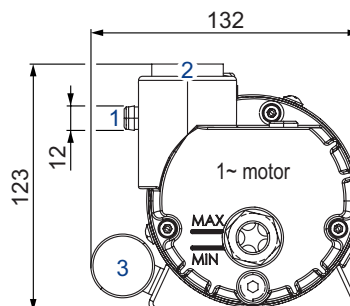
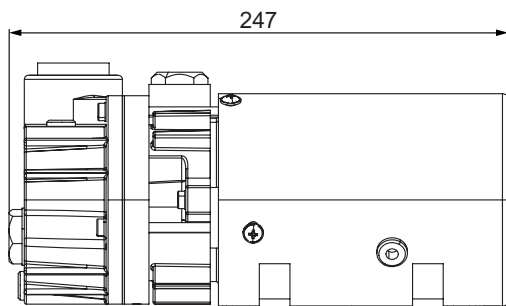
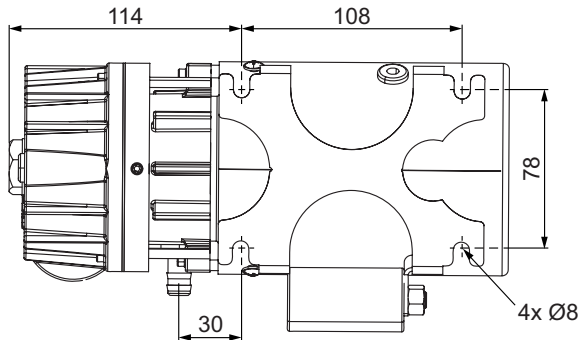
- lubrifiées et refroidies par air, pour un service temporaire <sup>3)</sup>
- incl. soupape anti-retour intégré

### Pompe per vuoto a palette

- lubrificate ad olio e raffreddate ad aria, per operazione a breve tempo <sup>3)</sup>
- incl. valvola non ritorno integrato

### Bombas de vacío de paletas

- con aceite y refrigerado por aire, para un funcionamiento de service temporal <sup>3)</sup>
- incl. válvula antirretorno

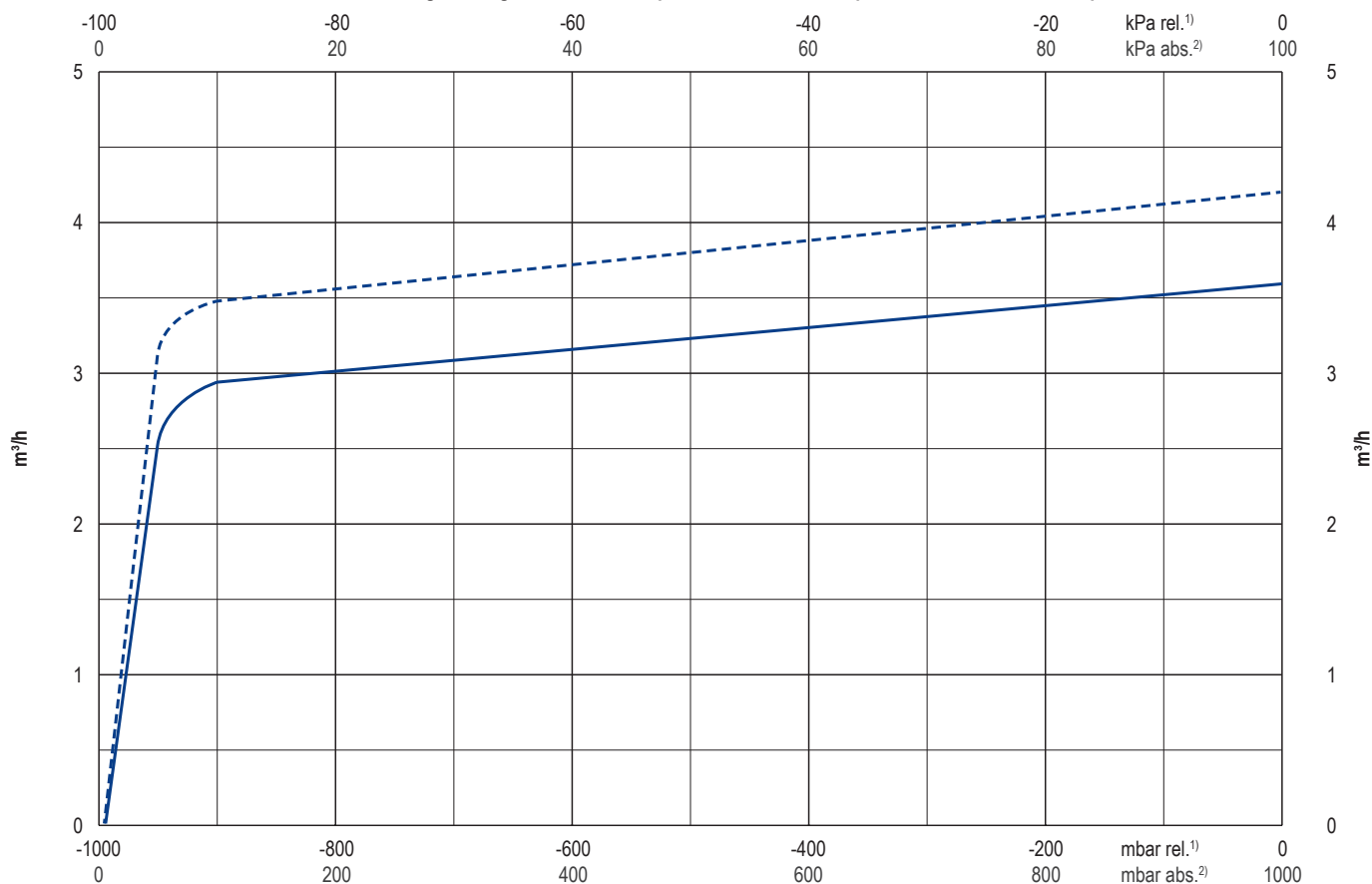
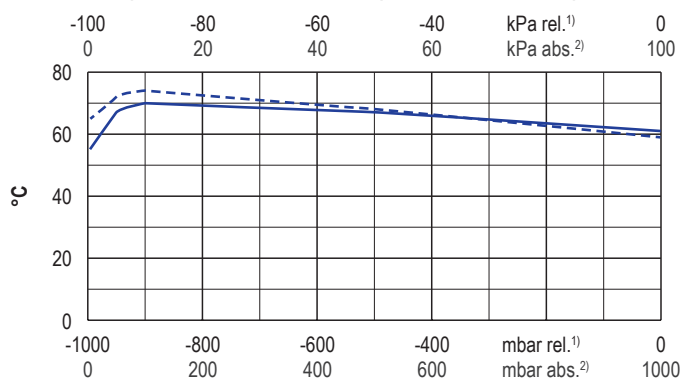
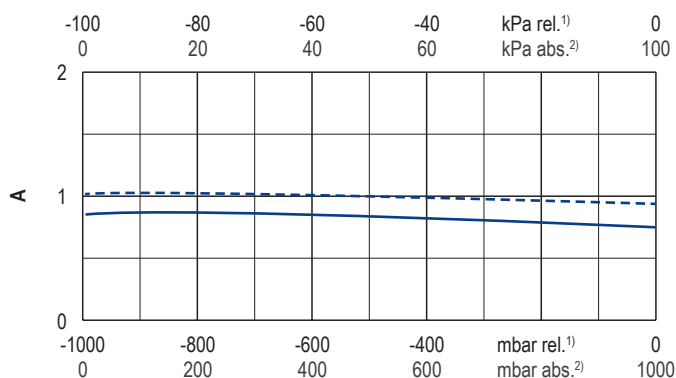


- 1 Vacuum connection  
Sauganschluss  
Raccord vide  
Raccordo aspirazione  
Conexión de vacío
- 2 Exhaust air  
Abluft  
Échappement d'air  
Scarico aria  
Aire residual
- 3 Capacitor  
Kondensator  
Condensateur  
Condensatore  
Condensador

m³/h		mbar abs. <sup>1)</sup>		kg	dB(A) @ 3.0 mbar		Oil <sup>2)</sup>
50 Hz	60 Hz	50 Hz	60 Hz		50 Hz	60 Hz	
3.6	4.2	3.0	3.0	5.5	56.9	57.2	0.06

Ⓜ	kW		V		min <sup>-1</sup>		A		ISO F • ...	no. O 5.4 + Ⓜ
	50 Hz	60 Hz	50 Hz	60 Hz	50 Hz	60 Hz	50 Hz	60 Hz		
3~	0.1	0.12	Δ 230 / Y 400 V ±10%	Δ 265 / Y 460 V ±10%	2750	3350	0.9	0.5	... IP55	G021908
	0.1	0.1	220-240 V ±5%	220-240 V ±5%	2700	3200	1.1	1.1	... IP20 • 6 µF (400 V)	G021905
1~	0.1	0.12	100-110 V ±5% UL	100-120 V ±5% UL	2700	3200	2.3	2.1	... IP20 • 25 µF (200 VAC)	G021906
	0.1	0.12	200-220 V ±5%	200-220 V ±5%	2655	3060	1.1	1.2	... IP20 • 8 µF (400 V)	G021907

- 1) mbar absolute      mbar absolut      mbar absol      mbar assoluto      mbar absolutos
- 2) Becker Lube: M 32 (mineral), S 32 (synthetic) + SL 32 (food)      Becker Lube: M 32 (mineral), S 32 (synthetic) + SL 32 (food)      Becker Lube: M 32 (mineral), S 32 (synthetic) + SL 32 (food)      Becker Lube: M 32 (mineral), S 32 (synthetic) + SL 32 (food)      Becker Lube: M 32 (mineral), S 32 (synthetic) + SL 32 (food)
- 3) Operation:      Betrieb:      Service:      Operazione:      Funcionamiento:
- 8.5 min → max. vacuum & 1.5 min → 0 vacuum      8.5 min → max. vacuum & 1.5 min → 0 vacuum      8.5 min → max. vacuum & 1.5 min → 0 vacuum      8.5 min → max. vacuum & 1.5 min → 0 vacuum      8.5 min → max. vacuum & 1.5 min → 0 vacuum
- Dimensions in mm      Maßangaben in mm      Mesures en mm      Misure in mm      Dimensiones en mm

Exhaust air temperature • Ablufttemperatur • Température d'air à l'échappement  
Temperatura dell'aria scarica • Temperatura del aire de escapeCurrent consumption • Stromaufnahme • Courant absorbé  
Consumo corrente elettrica • Consumo de corriente

— 50 Hz  
--- 60 Hz

Refers to the intake pressure  
Bezogen auf den Ansaugdruck  
Se réfère à la pression d'aspiration  
Riferirsi al pressione d'aspirazione  
Referido a la presión atmosférica

1) relative      relativ      relatif      relativo      relativa  
2) absolute      absolut      absolu      assoluto      absoluta

▪ reference data      Bezugsdaten      référence      riferimento      referencia      1000 mbar,  
(atmosphere)      (Atmosphäre)      (atmosphère)      (atmosfera)      (atmosférica)      20°C  
▪ tolerance      Toleranz      tolérance      tolleranza      tolerancia      ±10 %

i	Variants	Varianten	Variantes	Varianti	Variantes
O 5.4	With suction filter	Mit Ansaugfilter	Avec filtre d'aspiration	Con filtro di aspirazione	Con filtro de aspiración
	Performance data / dimensions can differ Combinations on request	Leistungsdaten / Abmessungen können abweichen Kombinationen auf Anfrage	Données de performance / mesures peuvent différer Combinaisons sur demande	Dati di performance / misure possono differire Combinazioni su richiesta	Datos de rendimiento / dimensiones pueden diferir Combinaciones a petición