

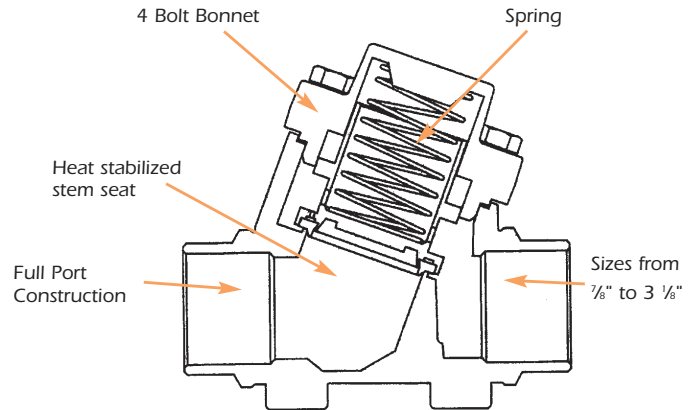
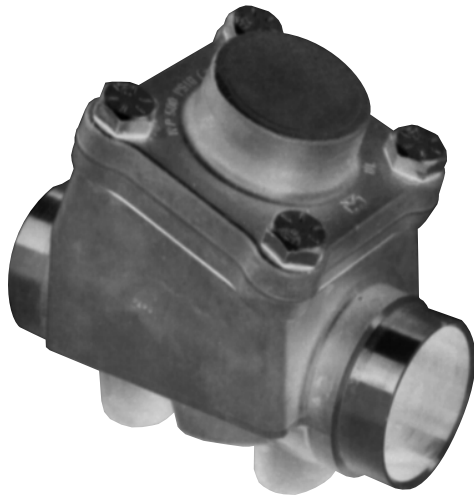


**MUELLER<sup>®</sup>**

**REFRIGERATION &  
AIR CONDITIONING  
PRODUCT CATALOG**



# Four-Bolt Check Valves



## Engineered For Positive Flow Control.

Mueller's four-bolt check valves offer multiple installation positions and can easily be assembled and disassembled. The four-bolt check valve can be installed vertically or horizontally depending on the application.

The four-bolt flange type bonnet is designed to offer the flexibility of easy component change out and quick reassembly. The special "Y" type design allows for minimal pressure drop and increased flow capacity. A durable non-asbestos gasket assures positive sealing upon reassembly.

Mueller, unique in the industry, manufactures both rod and forgings, thereby assuring the most stringent quality levels from first draw to final assembly.

### Look for these Mueller advantages:

- ▶ 4-bolt flange allows easy disassembly and assembly for brazing or internal component changes.
- ▶ Forged brass body, manufactured by Mueller, ensures the product exceeds the most stringent quality standards in the industry.
- ▶ Horizontal or vertical installation.
- ▶ "Y" type design provides minimal pressure drop and increased flow capacity.
- ▶ Non-asbestos gasket material and O-Ring seal ensures seal integrity and is compatible with new refrigerants and oils.
- ▶ Heat-stabilized Teflon seat provides positive seal across wide temperature ranges.
- ▶ Working temperature range from -40°F to 300°F, and maximum working pressure 500 psig.
- ▶ Back-pressure shutoff at low pressure differentials.
- ▶ Sizes from 7/8" to 3 1/8".
- ▶ Special springs available for various differential applications.
- ▶ All valves 100% tested and compatible with all fluorinated refrigerants.
- ▶ Recognized under the component program of Underwriters Laboratories for use in the USA and Canada.



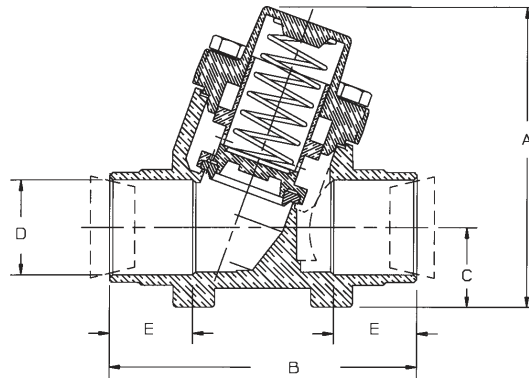


# Four-Bolt Check Valves

## Specifications

Technical Data		
Refrigerants		All fluorinated types
Maximum Working Pressure		500 psig
Burst Pressure		2500 psig
Working Temperature Range		-40°F/ 300°F
Pressure Required to Open	B 34235	<1 psi
	B 34236	<1 psi
	B 34237	2 psi
	B 34238	2 psi
	B 34239	2 psi
	B 34240	2 psi
	B 34241	2 psi
Recommended Bolt Torques	B 34235	8 - 15 ft.-lb.
	B 34236	8 - 15 ft.-lb.
	B 34237	10 - 20 ft.-lb.
	B 34238	10 - 20 ft.-lb.
	B 34239	10 - 20 ft.-lb.
	B 34240	15 - 25 ft.-lb.
	B 34241	15 - 25 ft.-lb.

Not to be installed with the bonnet facing down.



Four-Bolt Check Valves												
Size	Part No.	A	B	C	D	E	Cv	Weight	Replacement Kit No.**	Replacement Components		
										10 lb Spring	20 lb Spring	Gasket
7/8	B 34235	3 19/32	3 11/16	31/32	7/8	15/16	5.05	2.46	*	P 35656	P 35859	P 35709
1 1/8	B 34236	3 19/32	3 11/16	31/32	1 1/8	1	6.7	2.31	A 17986	P 35657	*	P 35709
1 3/8	B 34237	4 9/16	4 3/4	1 5/16	1 3/8	1 1/16	8.71	5.42	A 17987	P 35657	P 36305	P 35689
1 5/8	B 34238	4 9/16	4 3/4	1 5/16	1 5/8	1 1/16	10.06	5.04	A 17987	P 35657	*	P 35689
2 1/8	B 34239	5 7/8	6 3/8	1 11/16	2 1/8	1 1/2	36	12.6	A 17988	P 36544	*	P 35736
2 5/8	B 34240	8	8 7/8	2	2 5/8	1 7/8	70	*	*	*	*	P 36037
3 1/8	B 34241	8	8 7/8	2	3 1/8	1 7/8	*	*	*	*	*	P 36037

\*Consult Factory \*\*Replacement kit includes seat holder subassembly, cover gasket and 2 lb. spring

